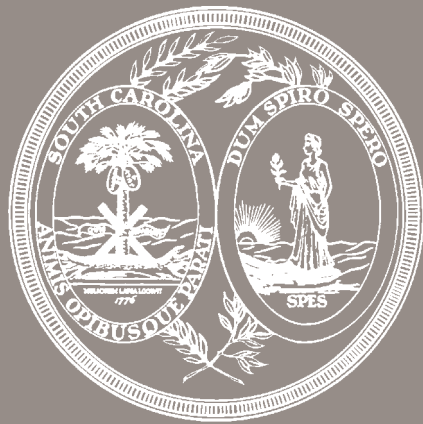




Take Palmetto Pride Where You Live

Legislative Report



South Carolina
Litter Commission



Preserving South Carolina's Beauty

TABLE OF CONTENTS

Executive Summary	3
The Litter Commission	4
Education & Communication Outreach Ad Hoc Committee	5
Legal Ad Hoc Committee	6
Strategic Planning Ad Hoc Committee.....	7
Strategic Plan Implementation, Monitoring & Evaluation	8
Measurement of Effectiveness	8
Outreach & Education.....	9
Outreach & Education.....	10
Programs & Campaigns: Litter Removal, Reduction, & Prevention.....	10
Programs & Campaigns: Litter Removal, Reduction, & Prevention.....	11
New Programs.....	12
Data Collection	13
Legislative Recommendations	14
Appendixes	15

TAKE PALMETTO PRIDE WHERE YOU LIVE LEGISLATIVE REPORT

Prepared by
Valerie Shannon
Program Coordinator

Participating Members:

South Carolina Department of Natural Resources
South Carolina Department of Transportation
South Carolina Department of Corrections
South Carolina Department of Probation, Parole & Pardon Services
South Carolina Department of Public Safety
Court Administration
PalmettoPride
Keep South Carolina Beautiful
Municipal Association of South Carolina
South Carolina Association of Counties
South Carolina Sheriff's Association
South Carolina Trucking Association

Executive Summary

I am pleased to present the first Litter Abatement Plan ever developed by the Litter Commission for the State of South Carolina. I am confident that successful implementation of the many measures included in this report will make a significant contribution toward a cleaner South Carolina. The legislative report contains achievements and goals set forth by the Litter Commission:

- On April 2, 2015, the Take Palmetto Pride Where You Live Act was enacted into law as Act 8 - legislative initiative sponsored by Rep. Gilda Cobb-Hunter.
- Twelve agencies were strategically chosen to comprise the Litter Commission as delineated in the bill; the Department of Natural Resources chairs the commission.
- Three ad hoc committees were established to address the concerns of litter reduction, removal, and litter law enforcement: Education & Outreach, Legal, and Strategic Planning.
- A comprehensive statewide strategic plan was created and approved.
- Quantitative data collected to measure effectiveness of litter reduction and litter law enforcement.
- Reviewed current legislation for any possible changes needed to assist the Commission in achieving its goals.

This report has been prepared in accordance with the Take Palmetto Pride Where You Live Act and the Commission has worked diligently in its first year to establish goals, define roles and as much as possible carry out the requirements as outlined in Act 8.



Alvin A. Taylor
Director, South Carolina Department of Natural Resources
Chairman, South Carolina Litter Commission

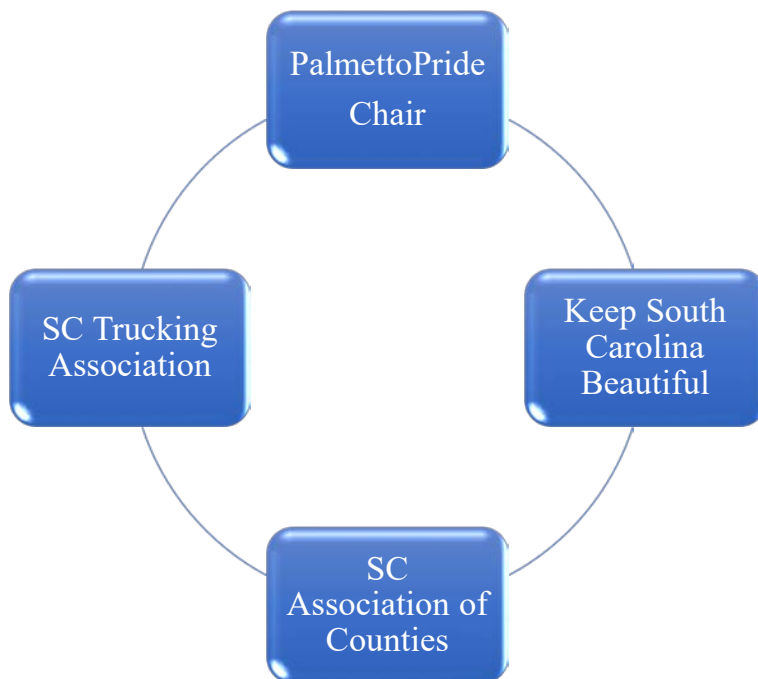
The Litter Commission



The Take Palmetto Pride Where You Live Act brought twelve organizations together to establish a strategic plan to identify goals, recommend initiatives for litter removal, reduction, and prevention, methods to expand litter awareness, and techniques on how to evaluate the effectiveness of ongoing programs and campaigns in the state. In its role as chair, the Department of Natural Resources convened its first Litter Commission meeting on August 13, 2015 in Columbia, South Carolina at SCDNR headquarters. Three Ad Hoc committees were formed based on areas of expertise: Education & Communication Outreach, Legal and Strategic Planning.

Education & Communication Outreach Ad Hoc Committee

The Education & Communication Outreach Ad Hoc Committee is chaired by PalmettoPride and includes Keep South Carolina Beautiful, South Carolina Association of Counties, and the South Carolina Trucking Association. The goal of this committee is to focus on programs that will help educate the general public about litter prevention. One goal is to partner with the Department of Education and incorporate litter prevention into the standardized curriculum. The committee will foster partnerships with other civic organizations across the state to improve awareness of litter prevention.

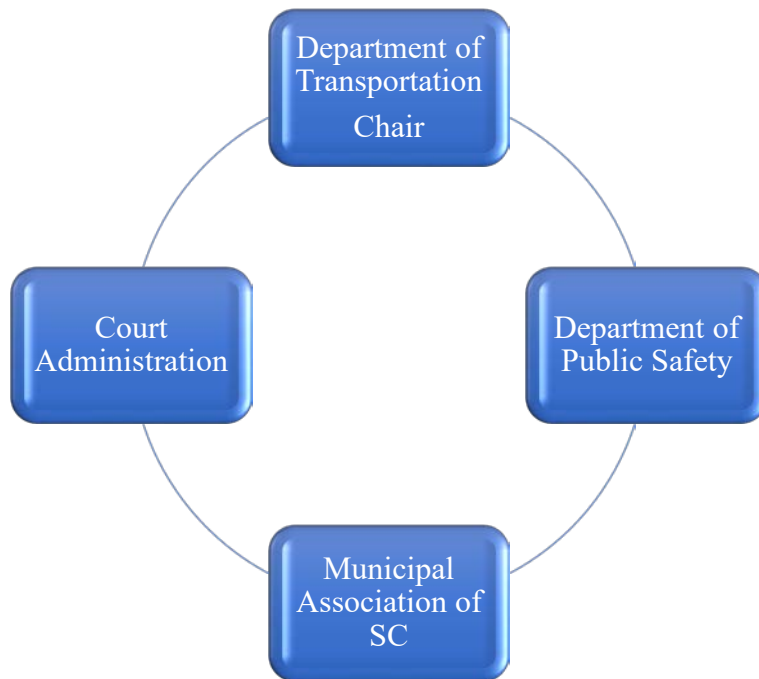


Goals of Committee

- Partnership with Department of Education
- Improved public awareness
- Quantifiable change

Legal Ad Hoc Committee

The Legal Ad Hoc Committee is chaired by the Department of Transportation, and includes the Department of Public Safety, Municipal Association of South Carolina and Court Administration. The goal of this committee is to develop the Memorandum of Understanding for the Commission, review current litter laws and make recommendations for the purpose of reducing state risk and liability in advancing community service methodologies. Current efforts include: creating a waiver and liability form requiring the Insurance Reserve Fund to cover liability for litter reduction efforts.

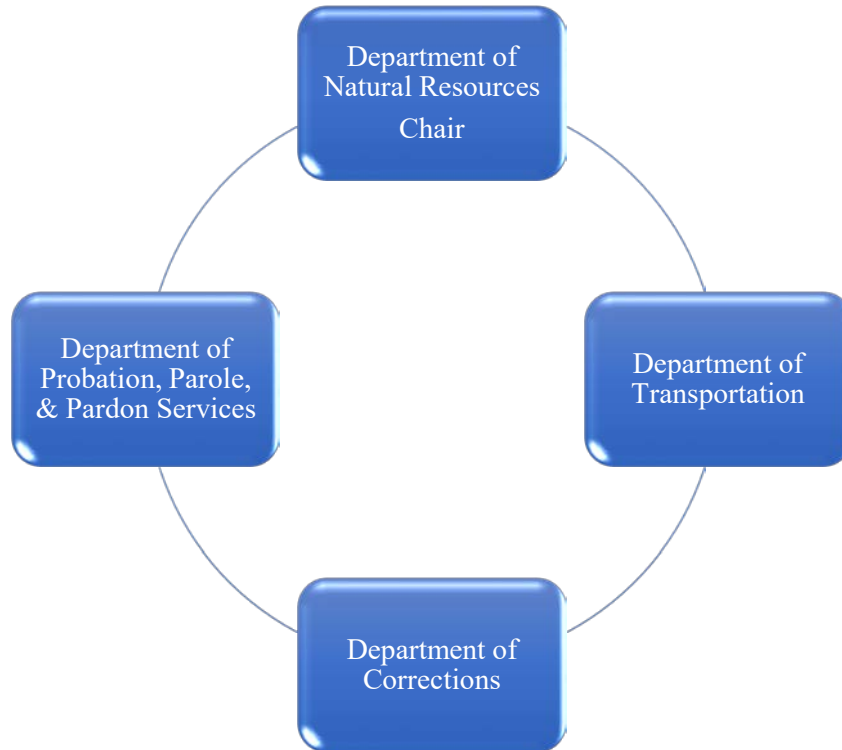


Goals of Committee

- Provide legal support in the development of the Memorandum of Understanding (MOU)
- Suggest legislative changes in accomplishing duties and responsibilities
- Evaluate and encourage community service requirements; revise supervisory forms

Strategic Planning Ad Hoc Committee

The Strategic Planning Ad Hoc Committee is chaired by the S.C. Department of Natural Resources and includes the Department of Transportation, the Department of Corrections and the Department of Probation, Parole and Pardon Services. This committee's focus is on the development of a strategic plan, data collection, programmatic efforts, and campaign effectiveness.



Goal of Committee

- Collect quantifiable data and monitor performance indicators of the strategic plan

Strategic Plan Implementation, Monitoring & Evaluation

The strategic plan was written and approved by the Commission for immediate execution and has four goals based on the composition of the stakeholders and the existing litter problem in South Carolina. The first goal is to establish an interagency agreement of cooperation or Memorandum of Understanding (MOU) between the members. The MOU will set the tone for unified cooperation with a precedence of open communication and shared resources.

Creating a comprehensive litter reduction plan is the second goal. Every county has target areas where residents routinely litter and illegally dump trash. The goal is to investigate these target areas and develop long-term cleanup solutions. Rural areas are at greater risk of oversight when it comes to communication barriers; therefore, expanding coordinated cleaning/mowing schedules in rural areas in conjunction with law enforcement and the fines associated with littering will ultimately build stronger relationships for a cleaner South Carolina.

Goal three is to increase litter reduction through public education and ongoing marketing strategies designed to raise awareness for the purpose of reducing littering frequency. The economic impact of litter and increased involvement with youth and adults through interactive programs and coordinated curriculum. This part of the strategic plan involves incorporating a comprehensive marketing campaign with targeted groups and partnering with the food and beverage industry to expand public awareness. Law enforcement awareness and policy enforcement plays a large role in educating the public. Creating an action plan to get circuit court judges more involved with sentencing community service is a start with behavioral change.

The fourth and final goal is to examine the various programs and campaigns of the effectiveness for litter reduction, removal, and litter law programs. The measurement of effectiveness will be based on established benchmarks of quantifiable data: an increase in littering fines and a decrease in the amount of visible litter. A three-year comparative analysis will determine if campaigns/programs are producing desired results once the evaluation is fulfilled. An independent consultant with an emphasis on market research, statistical analysis and sampling can be utilized for further examination is needed. *(Figure 1)*

Measurement of Effectiveness

The Commission recognized the need to examine the effectiveness of existing campaigns and programs for litter removal, reduction and litter law enforcement programs. To achieve the desired measurement of effectiveness and determine if the programs and campaigns are successful, data will be reviewed and comparatively analyzed for quantitative results. An on-line survey was conducted by the S.C. Department of Natural Resources titled “The Perception of Litter in South Carolina”, the survey results were diminutive as less than .01% of the population in the state participated. 67% of the respondents indicated they did not know who to call when they saw litter, while others stated there was a lack of campaign and program familiarity.

Outreach & Education

PalmettoPride

PalmettoPride has been the lead agency for litter eradication, education and awareness in South Carolina for the past 15 years; a non-profit, 501(c)3 organization that is a true public/private partnership comprised of state agencies, concerned citizens, corporate sponsors, and community and civic organizations with the stated goal of encouraging “behavioral change” about litter. Keep South Carolina Beautiful is the state affiliate of Keep America Beautiful with 26 certified affiliates to help the fight against litter and are key partners of PalmettoPride. Their goal is assist local affiliates with education, training, program development, and board development. Together, PalmettoPride and Keep South Carolina Beautiful coordinate with hundreds of local organizations, thousands of volunteers and work closely with law enforcement to prosecute littering and illegal dumping.

By the Numbers	
<i>Web Presence</i>	4000 Average Hits Per Month www.palmettopride.org
<i>Trade Shows</i>	250,000 Potential People Reached
<i>Puppet Show</i>	122 Schools - 55,610 Students
<i>Art Contest</i>	10,421 Students Participated
<i>SCDNR License Covers</i>	700,000 in Circulation
<i>Digital/Web Ad Buys</i>	12,308,200 Impressions
<i>Sports Radio</i>	USC 539,575 – Clemson 600,000 Per Game
<i>Television</i>	22,000 Spots
<i>SC Living Magazine</i>	1,000,000 In Circulation in 12 Issues
<i>Weeklies</i>	366,950 Per Month
<i>PSA</i>	3 - Great American Clean Up, Zero Tolerance, Adopt-A-Highway
<i>Other-Special Events</i>	40,000 Potential People Reached

South Carolina Department of Natural Resources

The S.C. Department of Natural Resources (SCDNR) serves as the lead agency for the Commission and is staffed by the agency to support the Commission. Support staff met with circuit court judges to determine better ways for the use of community service sentences for litter pick-up, toured rural counties to gauge the ongoing issues, interviewed litter control officers to gain a better understanding of the challenges and drafted the Commission’s strategic plan.

As a staff member of the SCDNR, a litter prevention campaign and program were implemented to reduce litter on the 1.8 million acres of public lands owned or managed by SCDNR; the program focuses on the environmental impact of litter and wildlife in South Carolina. Initial steps for these efforts include an integrated media campaign, trademarked UP2U slogan, web presence, content creation for the Department’s social media platforms and is a representative of the litter education program at various events around the state sponsored by the agency.

Outreach & Education

Department of Natural Resources

<i>Web Presence</i>	1,400 Average Downloads Per Month www.dnr.sc.gov/up2u
<i>SCDNR License Covers</i>	500,000 in Circulation
<i>Trade Shows</i>	160,000 Potential People Reached
<i>PSA</i>	1,122,929 Potential People Reached
<i>SCDNR Wildlife Magazine</i>	42,000 in Circulation
<i>MASC-Uptown Magazine</i>	5000 in Circulation
<i>Digital/Web Buys</i>	122,358 Impressions
<i>SCDNR Rules & Regulations</i>	410,000 in Circulation

Programs & Campaigns: Litter Removal, Reduction, & Prevention

There are many programs and campaigns which exist throughout the state for litter removal; the programs/campaigns can be categorized as statewide, county or local level sponsored by a state agency, local government, and/or nonprofit organization. A majority of the programs and campaigns listed have been in existence for at least 15 years and should could be evaluated for effectiveness by an independent consultant. Not all programs and campaigns have been identified in their totality; however, listed below are a few of the larger programs and campaigns held throughout the state:

Programs

- Beach Sweep/River Sweep organized by the South Carolina Sea Grant Consortium in partnership with the South Carolina Department of Natural Resources, is held annually and is the largest one-day litter cleanup of South Carolina's beaches and waterways.
- Adopt-A-Highway is managed by PalmettoPride as a year round roadside clean-up program which promotes local ownership of beautification efforts in the state.
- The Public Service Employment Program (PSEP) is offered by the Department of Probation, Parole and Pardon Services (PPP) as one of its community based programs. The program places convicted non-violent offenders in unpaid positions with non-profit or tax-supported agencies to perform a specified number of community service work hours. Public Service Employment allows the community to hold non-violent criminal offenders accountable for their actions through direct service back to the community in which they live. Litter mitigation is one of the many ways that PPP can provide offender workers to South Carolina communities through the PSEP. In 2016 the total number of worksites which offered public service employment were 8 recycling centers and 52 litter sites across the state; 377 offenders were assigned to litter pickup sites and 51 offenders were assigned to recycling centers.

Programs & Campaigns: Litter Removal, Reduction, & Prevention

- Wildlife & Litter is a program which focuses on the harmful effect of litter on wildlife and the environment at recurring SCDNR sponsored events.
- The SC Department of Corrections Litter Program has 24 crews consisting of 202 inmates patrolling established interstate routes to clean up litter across the state five days week. The Department of Transportation, Department of Corrections and the Department of Public Safety jointly entered into to a Memorandum of Understanding to cooperatively work together to improve litter control on South Carolina’s interstates.
- PalmettoPride Clean Team is a program designed to engage neighbors, family and friends to adopt a special area to monitor and clean up regularly.
- Palmetto Prideways in joint partnership with PalmettoPride, the South Carolina Department of Transportation, and the South Carolina Department of Corrections offers the opportunity for businesses of all sizes to sponsor sections of an interstate to be cleaned by SC Department of Corrections inmates.
- Litter Trashes Everyone is an educational program for elementary students held annually to create art which promotes the effects of litter on the environment.
- The Cigarette Litter Prevention Program is sponsored by Keep America Beautiful and provides accessible information, educational tools, funding for ash receptacles and distribution of pocket /portable ashtrays.
- The Great American Clean Up is sponsored by Keep South Carolina Beautiful; it is a community improvement program which kicks off each spring which engages volunteers who take action in their communities to create positive change and lasting impact. PalmettoPride and Keep South Carolina Beautiful, in partnership with Keep America Beautiful, Inc., coordinate the program.

Campaigns

- PalmettoPride in partnership with the South Carolina Litter Control Association, promotes a “Zero Tolerance for Litter” campaign every April. This month-long campaign brings together officers, elected officials and concerned citizens with a dual-purpose mission to enforce state and local litter laws and to educate the public on the effects of litter in the state.
- Help-A-Critter-Don’t Litter is a SCDNR campaign which focuses on the harmful impact of litter on wildlife.

New Program



SCDNR Tips is an anonymous tip line designed to allow the public to report non-emergency criminal activity directly to South Carolina Department of Natural Resources Law Enforcement Division. Tips can be submitted several ways:

- Text tips to keyword SCDNR along with tip to 847411 (tip411) from mobile phone
- Sharing information through DNR's integrated web form at www.dnr.sc.gov
- Download the app to a smartphone or tablet [iTunes](#) or [Google Play](#)

If someone is pictured/videotaped throwing litter out of a vehicle window or illegally dumping, the individual will be investigated and possibly fined.

What type of information will be needed:

- Provide as much information as possible including a name if possible
- Age and description of the suspect
- Vehicle description
- Direction of travel
- When and where it occurred and address if known

Data Collection

Determining Hot Spots

The Association of Counties and the Municipal Association of South Carolina were tasked with determining the top ten littered roads independently. To that end, 46 counties and 270 municipalities were surveyed. The data was collected, integrated and any duplications of streets and roads were extracted. The raw data was then recorded into the Geographic Information System (GIS) displaying the data as graphic information, for ease of use, quick analysis, to detect patterns and realize possible relationships as it relates to litter hot spots. Litter is a subjective matter, and future surveys should include illustrative examples of minute to significant litter volumes. *(Figure 2)*

Trash Collection

The South Carolina Department of Transportation, along with the Department of Public Safety and the South Carolina Department of Corrections jointly entered into a Memorandum of Understanding to cooperatively work together to identify and remove litter on South Carolina's highways. Each agency has developed an improvement plan to accomplish the objective of reducing and removing litter. The Department of Public Safety will regularly identify substantially littered areas on the interstate to be cleaned, the Department of Corrections inmate cleaning crew then coordinates cleaning schedules with the South Carolina Department of Transportation's mowing schedule.

Department of Transportation Annual Litter Pick-Up Stats Statewide:

FY2014 July1, 2013 – June 30, 2014	3,365,030 lbs.	1,682.5 Tons
FY2015 July1, 2014 – June 30, 2015	3,765,976 lbs.	1,882.9 Tons
FY2016 July1, 2015 – June 7, 2016	3,273,228 lbs.	1,636.6 Tons

Totals represent all coordinated efforts of the various year-round cleaning events.

Law Enforcement

Three law enforcement agencies provided littering data for FY2015: the South Carolina Department of Public Safety, the South Carolina Sheriff's Association, and the South Carolina Department of Natural Resources. Enforcement of the law is key in the role of litter prevention and behavioral change. The true measurement of effectiveness will be a three year comparative analysis of quantitative differences: +/- citations issued, an increase in the number of participants performing community service (16-11-700), and persuasive campaigns. *(Figure 3)*

Legislative Recommendations

There is much work to be done from litter law enforcement to conceivably increase fines; however, the Commission is in the early stages of establishing goals, expanding partnerships, and exploring new solutions for a cleaner South Carolina. The Commission at this time does not have any recommendations for legislative changes; however, discussions involving community service as it relates to statute 16-11-700 F (1 & 2) is a possibility for consideration:

- (F)(1) When the penalty for a violation of this section includes litter-gathering labor in addition to a fine or imprisonment, the litter-gathering portion of the penalty is mandatory and must not be suspended; however, the court, upon the request of a person convicted of violating this section, may direct that the person pay an additional monetary penalty instead of the litter-gathering portion of the penalty that must be equal to the amount of five dollars an hour of litter-gathering labor. Probation must not be granted instead of the litter-gathering requirement, except for a person's physical or other incapacities.
- (2) Funds collected pursuant to this subsection instead of the mandatory litter-gathering labor must be remitted to the county or municipality where the littering violation took place. The money collected may be used for the litter-gathering supervision.

Appendix

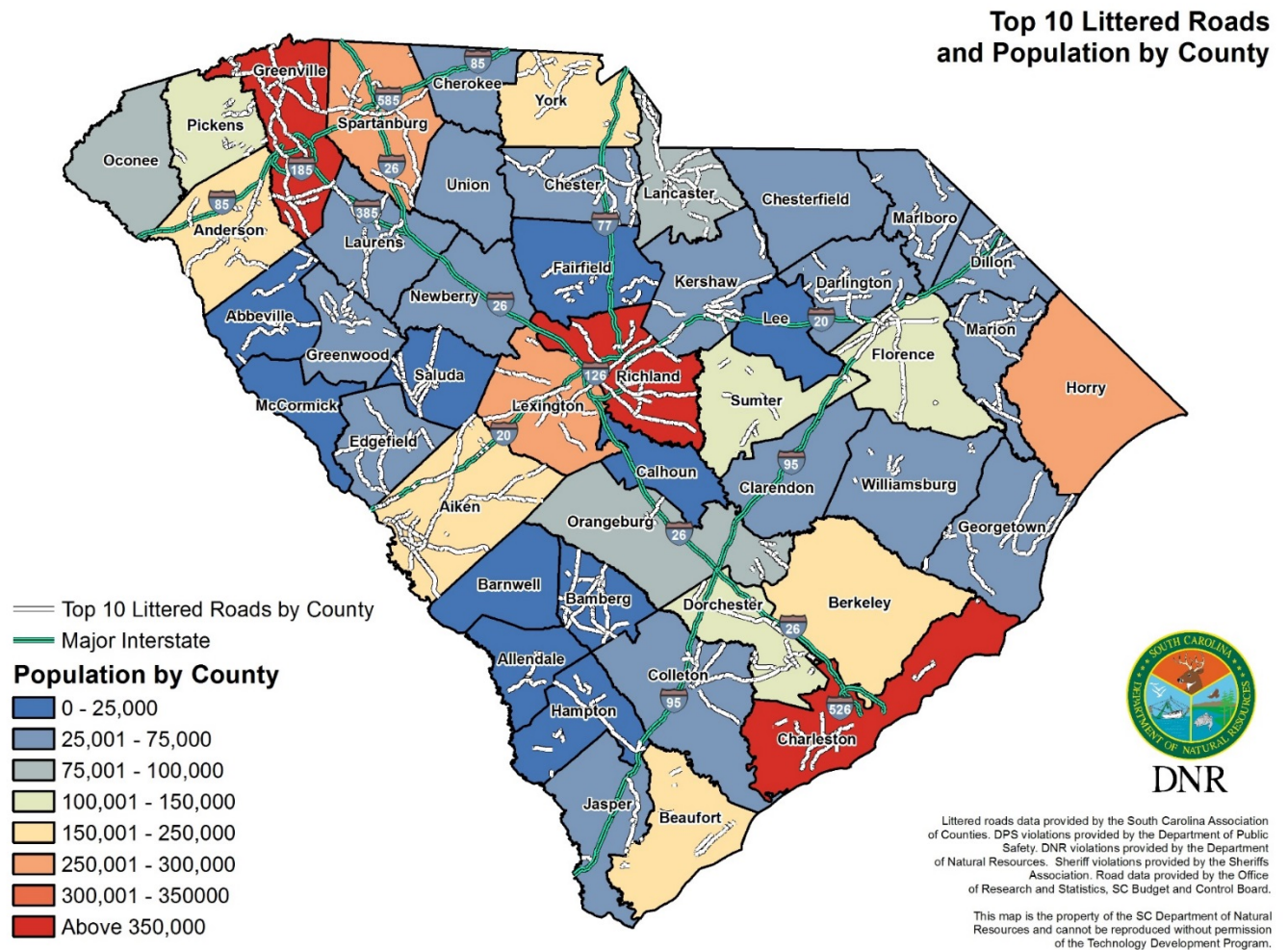
Figure 1 - Strategic Plan

The strategic plan has identified four goals based on the composition of the stakeholders being the Litter Commission and South Carolina as a whole. The strategy emphasizes a planned approach with long-term commitments to improve the environment by reducing litter through education and enforcement of the law.

Goal 1: Create Memorandum of Understanding between Litter Commission Members			
<i>Objective 1.1: Define roles and responsibilities of the Litter Commission Members</i>			
REF	ACTION	IMPLEMENTATION TASKS	PERFORMANCE INDICATORS
1.1.1	Develop a plan detailing the roles and responsibilities for the Commission and implementation schedule.	Communicate responsibilities effectively. Develop reasonable time frames for accomplishing plan.	Final report should clearly outline roles and responsibilities.
Goal 2: Create litter reduction plan			
<i>Objective 2.1: Identify and prioritize sites for litter reduction.</i>			
REF	ACTION	IMPLEMENTATION TASKS	PERFORMANCE INDICATORS
2.1.1	Identify areas where change or improvement is needed.	Ensure all litter complaints are recorded and amount of litter collected.	Litter complaints recorded.
2.1.2	Expand coordinated cleaning and mowing agreements to rural areas.	Coordinate efforts through DOT central office for MOU and County Offices.	Number of agreements obtained & appearance. Increased number of parties participating Reduced litter in rural areas
<i>Objective 2.2: Provide adequate waste management and recycling containers at all government facilities.</i>			
2.2.1	Provide waste and recycling containers as needed and ensure they are serviced regularly.	Adequate waste/recycling infrastructure and maintenance contracts.	Contracts are well maintained.
Goal 3: Increase litter reduction through public awareness			
<i>Objective 3.1: Develop litter reduction awareness campaigns</i>			
REF	ACTION	IMPLEMENTATION TASKS	PERFORMANCE INDICATORS
3.1.2	Provide educational events to increase the public's awareness of litter and the environmental impact.	Identify target groups based on location and audience.	Development of a comprehensive campaign.
REF	ACTION	IMPLEMENTATION TASKS	PERFORMANCE INDICATORS
3.1.3	Partner with food, beverage and travel industries to increase public awareness.	Partner with fast food, travel, and beverage industry to seek mutually beneficial ways to increase public/customer awareness.	Incorporate anti-litter message with product/service through advertising.

<i>Objective 3.2: Work with other agencies to promote litter education in schools</i>			
REF	ACTION	IMPLEMENTATION TASKS	PERFORMANCE INDICATORS
3.2.1	To provide resources and assistance to schools to encourage litter education.	Perform review of existing curriculum to determine its effectiveness. Recommend curriculum additions to include litter education.	Availability of updated comprehensive curriculum. Number of students using litter education curriculum.
<i>Objective 3.3: Implement recognition incentives for litter reduction and prevention</i>			
REF	ACTION	IMPLEMENTATION TASKS	PERFORMANCE INDICATORS
3.3.1	Develop a system of rewards for individuals, groups and organizations for litter clean-up commitment.	Determine appropriate and meaningful award system.	Development of a value-added recognition system.
<i>Objective 3.4: Increase litter policies and enforcement awareness</i>			
REF	ACTION	IMPLEMENTATION TASKS	PERFORMANCE INDICATORS
3.4.2	Create action plan to implement community service through Circuit Court Judges.	Create necessary forms and documents for liability waivers and supervision.	Distribute and educate circuit court judges of available forms.
Goal 4: Programmatic Evaluation			
<i>Objective 4.1: Establish evaluation to measure performance effectiveness</i>			
REF	ACTION	IMPLEMENTATION TASKS	PERFORMANCE INDICATORS
4.1.1	Collect quantifiable data from various agencies.	Create comparative analysis chart of citations and littering fines.	± Litter citations and trash collected. Establish acceptable minimal benchmarks.

Figure 2 – Top 10 Littered Roads Reported by County



Abbeville	Mt. Olive Church Road (S-1-277) from SC 203 to Ole Abbeville Hwy (S-1-333) 1.4 miles
	Carweilyn Rd (S-1-271) from SC 28 to Flexible Technologies, 0.8 miles
	Old Calhoun Falls Hwy (S-1-32) from SC 72 to SC 28 by-pass, 13.1 miles
	SC 71 N from SC by-pass to Gassaway Farm Road, 7.1 miles
	SC 184 West SC 28 to Lake Secession Bridge 2.6 miles
	SC 184 EAST from the Town of Donalds limit to SC 252 4.8 miles
	SC 252 West from the Town of Ware Shoals limit to SC 184 1.3 miles
	SC 81 South from the Town of Calhoun Falls to Russell Dam Overlook Rd 2.4 miles
	SC 28 By-pass from SC 20 Old Calhoun Falls Hwy 2.8 miles
	SC 72 East from Steenson Road to Greenwood County line 4.8 miles
Aiken	Storm Branch Rd S-145 from Hwy 421 (Aiken- Augusta Hwy to Silver Bluff Road Hwy 302)
	Hwy US 1 Jefferson Davis Rd from Aiken City limits to SC/GA state line
	Pine Log Rd S-65 from intersection of Silver Bluff Rd to Hwy 125 Atomic Rd
	Atomic Rd Hwy SC 125 from N. Augusta city limits to county line to Allendale Co
	Williston Rd - Hwy 278 from the state line to the county line at Barnwell Co.
	Salley Rd - Hwy SC 394 from Surrey Race Rd (Hwy 4 to the county line at Orangeburg Co
	Hwy 39 (Old 96 Indian Trail Rd) at Saluda County line to Orangeburg County line (Festival Trail Rd)
	Hwy 302 (Wagener Rd at Aiken City Limits to Lexington Co line (Wagener Rd)
	I-20 from SC/GA state line to the Aiken County line (mile marker #37)
Silver Bluff Rd Hwy 302 from Aiken City limits to Atomic Rd (Hwy 125)	
Anderson	Bellhaven Rd (S-10-0474)
	Lewis St (S-09-0047)
	Monitor Dr (C-09-0304)
	Courtney St EXT (S-04-055)
	Hwy 29 N and S (US-04-0029)
	High Shoals Rd (S-15-152A)
	Middleton Rd (S-15-0108)
	Amity Rd (S-10-0048)
	Hwy 187 S (SC-04-0187)
	Boyd St. (C-09-0190)
	Due West Hwy (SC-04-0185)
	Hopewell Rd (C-06-0015)
	Shambert Forest community (identify by Amy St C-12-30
Old Town New Town community (identify by Evergreen St, S-04-071)	
Homeland Park community (identify by S. Main St Ext. S-04-0002	
Bamberg	Salty Rd
	Highway 301 (from Duke's BBQ to Bamberg County road
	Carlisle Street to Slow Pitch Road
	Hwy 321 & Honey Ford Rd (Denmark)
	Hwy 321 (from Bamberg County line to Denmark City limit)
	Earnhardt Rd (from Rantowels Rd to Earnhardt town limit)
	Low County Hwy (from Hwy 301 to Kearsae Rd) Olar
	Capernaum Rd from Bamberg city limit to Hwy 321)
	Hwy 601 (from Bamberg city limit to Carlisle St)
Turn Ray Road and Voorhees Road	

Beaufort	Burton/Seabrook
	Beaufort Industrial Park
	Ramsey Road
	Laurel Bay Rd
	Hwy 21 from MCAS to Gardens Corner
Beaufort	Sheldon, Dale & Yamasee
	John Meeks Road
	Stroban Road
	Helena Island
	Pee Patch
	Cee Cee Road
	Sea Side Road
	Lands End Road
	Bluffton
	Hampton Hall / Bluffton Parkway Power Line Easement
	Power Line easement off of Bluffton Parkway near Buck Walter
	Davis Road
	Highway 170 North and South
	Hilton Head
	Mitchellville Road / Fish Haul Road
Wild Horse power line	
Charleston	SR 92 - Salters Hill Rd, Hollywood (entire road)
	SR 584 - SeeWee Rd, Awendaw (entire road)
	SR 881 - Lincolnville Rd, Ladson (entire road)
	State Hwy 700 - Maybank Hwy, Wadmalaw Island (from River Rd to Cherry Point Landing)
	SR 2147 - Edenborough Rd, John Island (entire road)
	SR 1334 - Cane Slash Rd, Johns Island (entire road)
	SR 21 - Main Road, Johns Island (entire road)
	SR 1310 - Miley Hill Rd, Ravenel (entire road)
	SR 1332 - Hyde Park Road, St. Pauls (entire road)
	SR 2204 - Germantown Rd, St. James/Santee (entire road)
Chester	Old Mill Rd (S 52)
	Hightower Rd (S 77)
	River Rd (S 197)
	Peden Bridge Rd (S 44)
	Dawson Dr (S 442)
	Graystone Rd (off of Ross Dye Rd S 53)
	Hilltop Rd (Hwy 21 in Great Falls)
	Armenia Rd (S 29)
	Mountain Gap Road (S 901)
	Lancaster Hwy 9 (East to interstate)

Colleton	Intersection of Robertson Blvd & Hwy 17A (Cottageville Hwy)
	Sidneys Rd from Hwy 17A to the Victory Veterans House
	Thunderbolt Rd from Sidneys Rd to Industrial Rd.
	Tuskegee Airmen Rd from Thunderbolt to Colleton Middle School
	Hwy 15 (North Jefferies Hwy) from Robertson Blvd to Mighty Cougar Dr
	McLeod Rd from I-95 to Three Mile Rd
	Stretch of Charleston Hwy from south edge of Chessey Creek swamp heading to St. Peter's Church Rd
	4 ramps onto & off I-95 to exit 62
	Risher Mountain Rd at McLeod Rd
	Hwy 64 from Walmart to lower entrance to Jones Swamp Rd
Darlington	Una Rd (S-16-0032) Golden Pine St. to Lee State Park Rd
	Lakeview Blvd (s-16-0021) Old Camden Rd to county line
	Sparrow Swamp Rd (S-16-0750) Kellytown Rd to county line
	Charleston Rd (S-16-0035) Pocket Rd to E. McIver Rd
	Flinns Rd (S16-0025) E. Bobo Newsome Hwy to E. Lydia Hwy
	Bonnie Dr. (All SB-13P) Turnpike Rd to Candy Lane
	Greenfield Rd (S-16-0524) Society Hill Rd to Mechanicsville Hwy)
	Centerville Rd (S-16-1192) Black Creek Rd to N. Center Rd
	S. Center Rd (S-16-0013) E. Bobo Newsome Hwy to Interstate 20
	Indian Branch Rd (S-16-0028) Bethel Rd to Wesley Chapel Rd
Dillon	Pee Dee Church Road from Rte. 9 to Lester Jackson Hwy
	Hwy 9 from Wix Rd to Little Rock
	Harlee's Bridge Rd from Hwy 9 to Oakland
	Hwy 301 N from Commerce Dr to South of the Boarder at NC line
	Old Mullins Rd from Lakeview at Hwy 9 east to Marion County line
	Henry St extension - Town of Latta to Hwy 917 West
	Hwy 917 W from Latta to Hwy 38 east of I-95
	Kentyre Rd - Hwy 301 N to Robeson County line (NC)
Dorchester	Pleasant Hill Rd from Hwy 9 E to Arnett Road
	Hwy 9 E from Smutherfordman Dr Bermuds Rd
	Boat Lading Rd off Old Beech Hill Rd (approx. 1 mile)
	Hwy 78 between intersection of Hwy 78/178 & Hwy 27 (approx. 3 miles)
	Sampson Rd off of Hwy 27 (approx. 1 mile)
	Two Churches Rd
	St. Mark Bowman Rd from Hwy 178 to Black Pond Rd (100 yards)
	Central Ave, Knightsville area
	Parlor Dr (approx. 1 mile from Dorchester Rd to County convenience site)
	Old Orangeburg Road
Old Beech Hill Rd from Hwy 61 to Wright Rd approx. 1.5 miles	
Hwy 17A South	

Edgefield	Sweetwater Rd
	Hwy 23 between Bilo and Wardlaw
	Woodyard Rd
	Hwy 25 S
	Basket St
	Currytown Rd
	Hwy 121
	Maher St
	Martintown Rd below Sportsman Corner
	Hwy 191
Fairfield	Golf Course Road @ Dead Man's Curve
	Longtown Rd
	Evergreen Rd
	Scotts Crossing
	Smallwood Rd (between Hwy 34 & Hwy 21)
	Flora Circle
	Rion Rd
	Hwy 21 N
	Clarks Bridge Rd
	Reservoir Rd
Florence	Hwy 52 from S. Florence High School to county line
	I-95 to mile-marker 160 to 164 (Florence)
	I-20 from I-95 to Darlington county line
	Hwy 76 from I-95 to Lynches River (Timmonsville)
	Paul Jones Rd from Hwy 52 to Hill Rd
	S. Ebenezer Rd from W. Dradio Dr to Pine Needles (Florence)
	TV Rd from W. Lucas St to I-95 (Florence)
	W. Sumter St from N. Cashua to N. Ebenezer (Florence)
	Cecil Rd from Morris St. to Dalton Rd (Lake City)
	Dalton Rd from Morris St (Lake City)
Georgetown	Kent Rd Hwy 521 to Gapway Rd
	Hwy 521 bypass to Georgetown city limits
	Hwy 701 (Wedgefield Rd to Yauhana Bridge)
	Brick Chimney Rd
	Hwy 17 N (Bridges to Pawley's Island)
	Hwy 17 S Santee Bridges to city limits
	Powell Rd
	Hwy 41 bypass
	Kings River Rd Pawley's Island
	Old Kings Hwy Murrell's Inlet
Greenville	Hwy 418
	Hwy 8
	Hwy 25 S
	McKelvey Rd

	Holiday Dam Rd
	Hwy 414
	Hwy 101
	Hwy 25 S
	Hwy 276
	Hwy 290
Greenwood	E. Cambridge Ave from Keyway to Siloam Church Rd
	Hwy 221/25 S/178 Bypass from Sweetwater Rd to Hwy 25 S
	Old Ninety Six Hwy from Vintage Rd to Hitching Post Rd
	Parkland Place Rd from Emerald Rd to Siloam Church Rd
	Siloam Church Rd from Old Highway 246 S to E. Cambridge Ave ext.
	Oregon Farm Rd from Siloam Church Rd t Highway 246
	Old Laurens Rd from Bucklevel Rd to Hwy 246
	Evan Pond Rd from Hwy 72/221 E to Brickyard Rd
	Dixie Dr from Deadfall Rd to Hodges
	Mathis Rd from Beaudrot Rd to Hwy 10
	Hwy 254 / Cokesbury Rd from Deadfall Rd to Park Seed
	Airport Rd from Durst Avenue to Bucklevel Rd
	Milford Spring Rd from Hwy 72/221 E to Durst Ave
	Brickyard Rd from Hwy 72/221 E to Emerald Rd
	Wingert Road from Milford Rd to Bucklevel Rd
Hampton	Simmons Rd, Yamasee (Yamasee Hwy to Pocotaligo Rd)
	Pocotaligo Rd I-95 to Hwy 17A 21
	Mill Pond Rd, Varnville to Stanley Loop Rd
	Hickory Hill Rd to Pocotaligo Rd
	Co-Op Rd, Hampton (dirt portion of road)
	Pond Town Rd, Hampton Hwy 601 N to Prince William Rd
	Lena Furman Expr, Estill Browning Gate Rd to Savannah Hwy
	Sprayfield Rd - Lena Furman Expr to Hwy 321 S
	Daily Rd, Garnett Hwy 321 S to Augusta Stagecoach
Roberville Rd, Garnett (Augusta Stagecoach Rd to Black Swamp Rd)	
Jasper	Entranceways into County
	Hwy 17 from Black River Bridge to 315 approx. 3 miles
	Hwy 321 from Hampton Co line into Jasper approx. 1 mile
	Hwy 601 from Hampton county line approx. 1 mile
	I95 from Hampton county line to Jasper approx. 1 mile
	I95 from GA line into Jasper approx. 2 miles
	Church Rd from Hwy 17 to Purryburg approx. 2 miles
	Lowcountry Dr/Hwy462/Hwy 278 from N. Okatie to Snake Rd approx. 3 miles
	Hwy 336 from I95 to Low Country Dr Hwy 462 approx. 4 miles
	Coosaw Scenic Dr / Hwy 462 from I95 exit 28 to Bees Creek Rd approx. 4 miles
Stobart Rd from Low Country Dr to Cherry Hill approx. 1 mile	

Kershaw	Hwy 34 to Hermitage Pond Rd
	Hwy 12 White Pond Rd
	Whiting Way (Bojangles - Lugoff from Hwy 1 to White Pond Rd)
	Mcrae Rd from Hwy 1 Halle St
	Brewers Spring Rd - Secondary 90
	Old Stage Coach Rd to Hwy 1
	Cleveland School Rd from Black River Rd to Mt. Olive
	Timrod Rd SC Hwy 346
	Black River Rd from Hwy 521 to Red Hill Rd
Lancaster	Henry Harris Rd
	Lynwood Dr
	Pageland Hwy
	Flatcreek Rd
	Hwy 157 / Kershaw
	Hwy 521 Charlotte Hwy
	Hwy 5
	Campcreek Rd
	Hwy 160 Fort Mill Hwy
	Rocky River Rd
Laurens	Bull Hill Rd (County Rd from Hwy 14 to intersection of Hurricane Rd
	A B Jacks Rd (SR S30-43) city limits Laurens to city limits of Clinton
	Hwy 221 S from city limits of Laurens to Lake Greenwood
	Powers Rd (SR S30-41 from S. Harper Ext (S-42 to 127) bypass
	Forest Rd (SR S30-116 from Leesville Church Rd (S-335) to the city limits of Clinton
	Torrington Rd SR S30-46 and S30-53 from city limits of Laurens to city limits of Clinton
	Old Laurens Rd (county road) from city limits of Laurens to city limits of Fountain Inn
	Whelon Rd (SR30-496) from Hwy 76 W to Welcome Church Rd
	Flym Smith Rd (SR 30 -526) from Riverfork (S-29) to dead-end Remus Dr
Stagecoach Rd (SR S30-114) from Hwy 76 W to Hwy 221 S	
Lexington	Hwy 302 from S. Congaree to Aiken County line
	Hwy 6 - Redbank Platt Springs Rd to Hwy 302
	Bower Pwy from Piney Grove shopping mall
	Glenn Rd, Gaston
	Platt Springs Rd (Hwy 6 to Boiling Springs)
	Old Bush River Rd from St. Andrews to Lake Murray Blvd
	Hwy 378 W from Priceville Rd to Lexington Rd
	Old Orangeburg Rd from Hwy 302 and Pleasant View
	Two Notch from Hwy 6 to Muddy Springs
	Hwy 378 from I20 to Target store
Marion	Corner - South Hwy 501 / Old Conway (3 mile fork)
	4813 Hwy 76 (near Hot Spot)
	483 E Hwy 76

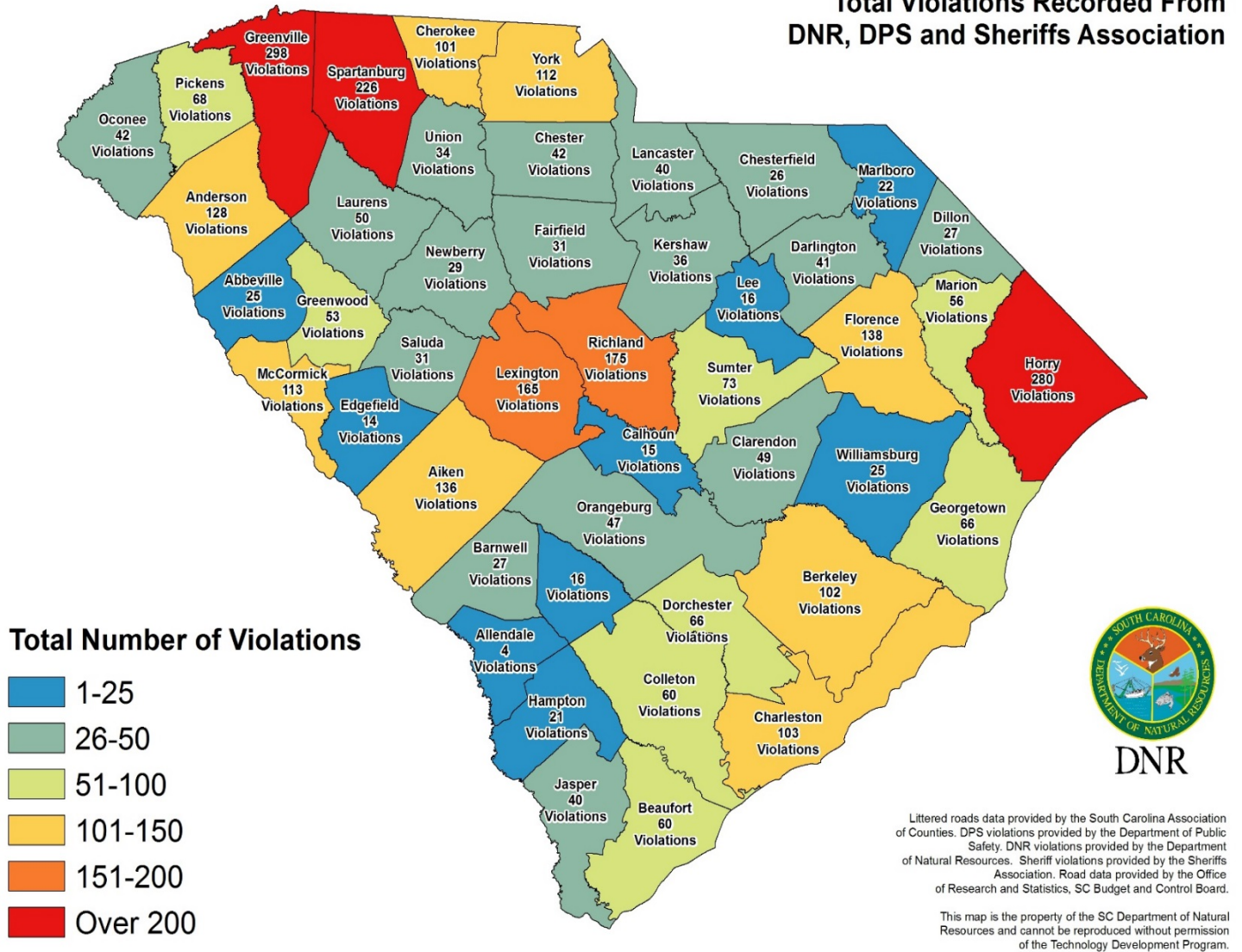
Marion	312 South Hwy 501 (near Ariel Cross Rd)
	Hwy 301 in Sellers near 4826 Chapman Moody Rd
	Intersection of Old Ebenezer Rd & 679 Stackhouse Rd
	Millers Rd interstate of Three Bridges (behind Mullins High School)
	Paul Richardson Rd
	Intersection of Hwy 908 & 378 near the Park & Blow
	Corner - Zion Rd and Hwy 41 (N Main turns onto 41)
Marlboro	Dunbar Hwy 32 Lane Rd #565 Oak River Rd #264
	Sherrill Rd #466
	Peabridge Rd #34
	Pee Dee Rd #522
	Adamsville Rd N #28
	Coxe Rd #29
	Bounty Acres Rd E #51
Salem Rd #18	
Orangeburg	Adidas St - Eutawville
	Acme St - Eutawville
	Country Colony in Eutawville
	Moncks Corner Rd - Eutawville
	Coach Rd - Holly Hill (starts at intersection of Coach Rd & Dawson St toward Old State Rd Holly Hill)
	Sugar Hill Rd Holly Hill
	Belleville Rd - Orangeburg (corner of Belleville Road towards Chestnut St)
	Jamison Rd - Orangeburg
	Goff Rd - Orangeburg
Stilton Rd - Orangeburg	
Pickens	Hwy 123 from Hwy 178 to Hwy 8
	Hwy 124 from Hwy 123 to Fishtrap Rd
	Fishtrap Rd from Hwy 123 to Shady Acres
	Sheriff Mill from Bushy Creek Rd to Hwy 8
	Jones Mill Road from Old Seneca Rd to Hwy 133
	Hwy 186 from county line on Dacusville
	Sheffield from Brushy Creek Rd to Wellington Rd
	Ambler School Rd from Hwy 8 to Hwy 135
	Williams Ave from Hwy 123 to Washington Ave
	Old Liberty Rd from Breazeale Rd to Amsterdam Rd
Richland	Garner's Ferry Rd
	Leesburg Rd
	Screaming Eagle
	Percival Rd
	Two Notch Rd
	Bluff Rd
	Monticello Rd
	Hardscrabble Rd
	Airbase Rd
	Lower Richland Blvd

Saluda	Rock Hill Rd (S-41-152) & Mine Creek (S-41-118)
	May Rd (S-41-155) dirt road section
	Mine Creek S-41, 155 from end to end
	Medical Park Rd S-41, 360 dirt road section
	Newberry Hwy (Hwy 121 N) half mile on each side of Hornes Store
	Johnston Hwy 121 S - Saluda Town Limits to Daniel Ave
	Pencreek Rd S4, 107 entire road
	Old Charleston Rd S 41, 98 from Fruit Hill to county line
	Fruit Hill S 41, 21 from Greenwood Hwy S approx. 1 mile
	Bonham Rd S41. 42 entire road
Spartanburg	Little Mountain Rd, Welford
	Hwy 56 Carolina Country Rd to Stone Station Rd
	Hwy 292
	Hwy 146 from Rocky Ridge Hwy 56
	Fairforest Rd
	Hwy 29 from N Blackstock to I85
	California Ave
	Hanging Rock Rd
	Old Greenville Rd
Gibbs Rd	
Sumter	Cane Savannah Rd S43-539 from N. St. Paul Church Rd to Kings Hwy SC 261
	Boulevard Rd (S43-82) from Red Bay Rd (S43-466) to Mims Rd S43-260
	Bethel Church Rd S43-77 from Underwood Rd (S43-509) to Pinewood Rd SC120
	Pinewood Rd (120) from St. Paul Church Rd (S43-40) to Pinewood
	Narrow Paved Rd (SC 53) from Hwy 378 to I95
	Hwy 15 S from Nazarene Church Rd Clarendon County line
	Nero Circle (S43-1156 from Hwy 53 to Yarborough Rd S43-412
	Dinkins Mill Rd S43 - 73 Hwy 521 N to Kings Hwy
	Ramsey Rd S43 - 945 from Nettle Rd to Nazarene Church Rd S43-535
Ardis Pond Rd S43-1018 from Edens Rd to Queens Chapel Rd S43-92	
Williamsburg	Tupperware Rd - Hemingway S45-469
	Red Rd - Kingstree S45-798
	McClam Rd- Kingstree S 45-258
	Gausetown Rd - Kingstree s 45-455
	Sampson Rd - Hemingway S45 772
	Sandbridge Rd - Kingstree S45-569
	Eastland Ave -Kingstree S 45-186
	Hwy 261 toward Hemingway from Kingstree Hwy 261 E
	Hwy 377 S from Kingstree toward Hwy 521
	Hwy 52 S toward Hwy 261 - Manning
	Hwy 52 N toward Lake City
Hwy 527 W from Santee Elec to Black River Lumber	

York	Hwy 161
	Hwy 5
	Hwy 557
	Hwy 49
	Hwy 55
	Neely Store Rd
	DeVinney Rd
	Blackmon Rd
	Lincoln R
	Old Pickney Rd

Figure 3 – Citations Issued by Law Enforcement

**Total Violations Recorded From
DNR, DPS and Sheriffs Association**



Littered roads data provided by the South Carolina Association of Counties. DPS violations provided by the Department of Public Safety. DNR violations provided by the Department of Natural Resources. Sheriff violations provided by the Sheriffs Association. Road data provided by the Office of Research and Statistics, SC Budget and Control Board.

This map is the property of the SC Department of Natural Resources and cannot be reproduced without permission of the Technology Development Program.

Violations reported by: SCDPS, Sheriff Assoc. & SCDNR			
County	Assoc. & SCDNR	Population	Est. Visitation
Allendale	4	9,695	40,000
Abbeville	25	24,965	96,000
Aiken	136	164,753	1,100,000
Anderson	128	192,810	863,000
Bamberg	16	15,182	42,000
Barnwell	27	21,959	66,000
Beaufort	60	175,852	2,700,000
Berkeley	102	198,205	799,000
Calhoun	15	14,878	13,000
Charleston	103	381,015	5,600,000
Cherokee	101	56,024	262,000
Chester	42	32,337	208,000
Chesterfield	26	46,125	143,000
Clarendon	49	34,113	506,000
Colleton	60	37,771	459,000
Darlington	41	67,799	204,000
Dillon	27	31,127	383,000
Dorchester	66	148,469	198,000
Edgefield	14	26,553	39,000
Fairfield	31	22,976	122,000
Florence	138	139,231	2,100,000
Georgetown	66	60,773	539,000
Greenville	298	482,752	3,900,000
Greenwood	53	69,520	436,000
Hampton	21	20,405	32,000
Horry	280	298,832	7,600,000
Jasper	40	27,170	283,000
Kershaw	36	63,161	342,000
Lancaster	40	83,160	135,000
Laurens	50	66,533	228,000
Lee	16	18,343	41,000
Lexington	165	277,888	1,500,000
Marion	56	31,933	82,000
Marlboro	22	27,924	84,000
McCormick	113	9,846	198,000
Newberry	29	37,783	208,000
Oconee	42	75,192	453,000
Orangeburg	47	90,090	1,400,000
Pickens	69	120,368	597,000
Richland	175	401,566	3,500,000
Saluda	30	20,026	12,000

Violations reported by: SCDPS, Sheriff Assoc. & SCDNR			
County	Assoc. & SCDNR	Population	Est. Visitation
Spartanburg	226	293,542	1,500,000
Sumter	73	107,919	669,000
Union	34	27,876	94,000
Williamsburg	25	32,695	42,000
York	112	245,346	1,300,000

Total 3329

Population information: www.southcarolina-demographic.com

Visitor Information: South Carolina Department of Parks, Recreation and Tourism



The South Carolina Department of Natural Resources prohibits discrimination on the basis of race, color, national origin, disability, gender, religion or age. Direct all inquiries to the Office of Human Resources, PO Box 167, Columbia, South Carolina, 29202.

Total cost \$493.78

Total copies 50

Cost per copy \$9.87

Printed on recycled paper